

## **Calcutta House - Cafe Proposal**

Design Proposal for current Starbucks Coffee  
Calcutta House / London Metropolitan University  
Old Castle St, London E1 7NT

By **David Haziz**  
**22/04/2016**

## Contents

Brief	3
Research	4
Plan	5
Proposal	6-12
Materials	13
Menu	14

## Brief



In the next academic year 2016/17, all students from Commercial Road and Central House will be moving to Calcutta House. The building will be fully occupied and therefore, the atrium and Starbucks Coffee will become busier than ever.

Currently, the cafe in Calcutta House serves only a few hundreds students on a daily basis. Once the student move is completed, the Cafe will have to accommodate approximately 2,000 students from next year and therefore needs to be expanded.

The Cafe is also expected to add hot paninis, sandwiches and sides in its current product range of hot and cold drinks and cakes. To this end, a new kitchen will be added in the first floor and the transfers to and from the cafe will be done by trolleys. The budget is estimated in the range of £30-50K.



Calcutta House will be active for one year only, in 2017/18 all students will be moving to Holloway road as part of "One campus: One community" project.

## Research

COMFORT  
FAST  
SOCIAL  
HEALTHY  
TASTY

The research was done based on feedback from twenty interior design students at the CASS.

"Need more colour"

⋮

"Lack of food"

⋮

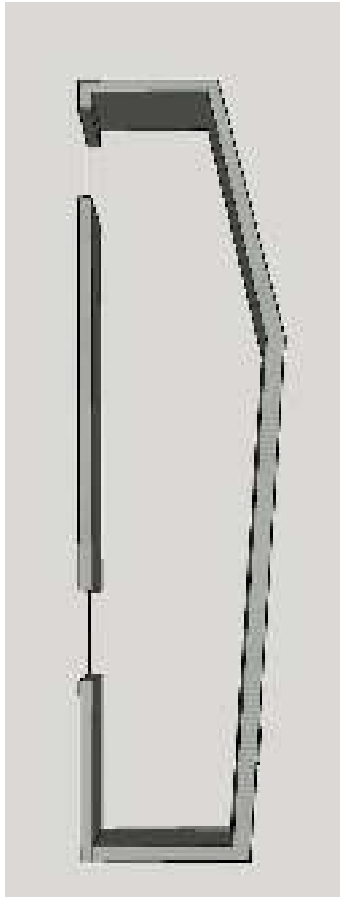
⋮

⋮

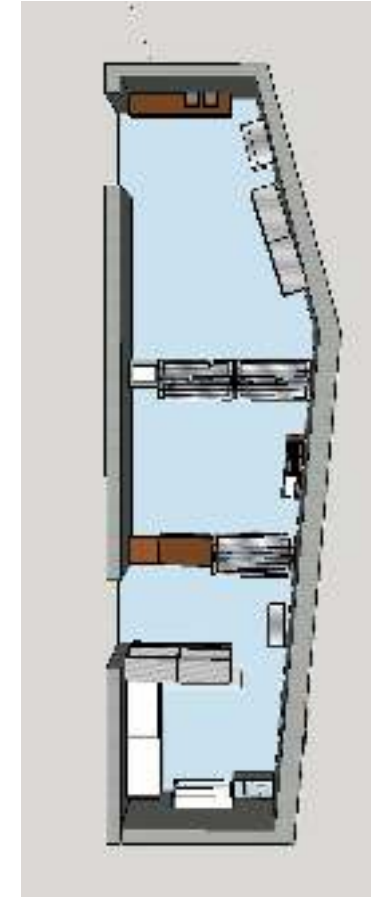
"Prefer to stay in the atrium rather than go outside"

"The furniture isnt comfortable"

## Plan



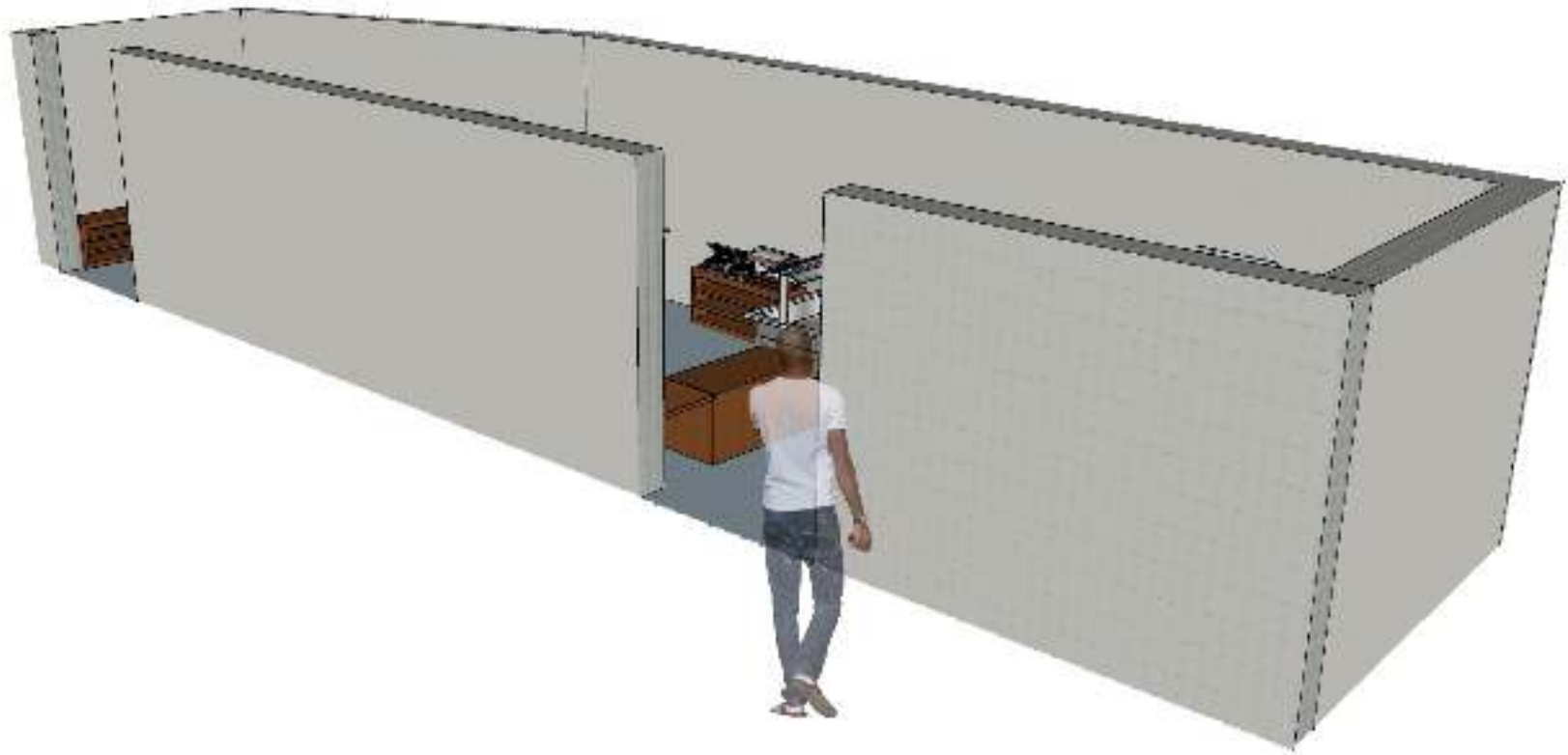
**Plan of the space**



**Proposed plan**

This is the cafe currently. As you can see it is quite a complicated space to work with, very small and built in a way when each wall is in a different angle. The walls are made of concrete so any change will increase the costs. There is also not enough light, as well except for the window in the ceiling above the cafe.

# Proposal



This image shows the two entrances to the cafe from the atrium.



The new cafe will be divided into two serving areas: the access to the first part (1) will be from the first door and will be serving grab-and-go sandwiches, fruits and snacks, cold and hot drinks. The access to the second area (2) will be from the second door. This area will be serving hot food as well as sandwiches and hot/cold drinks.

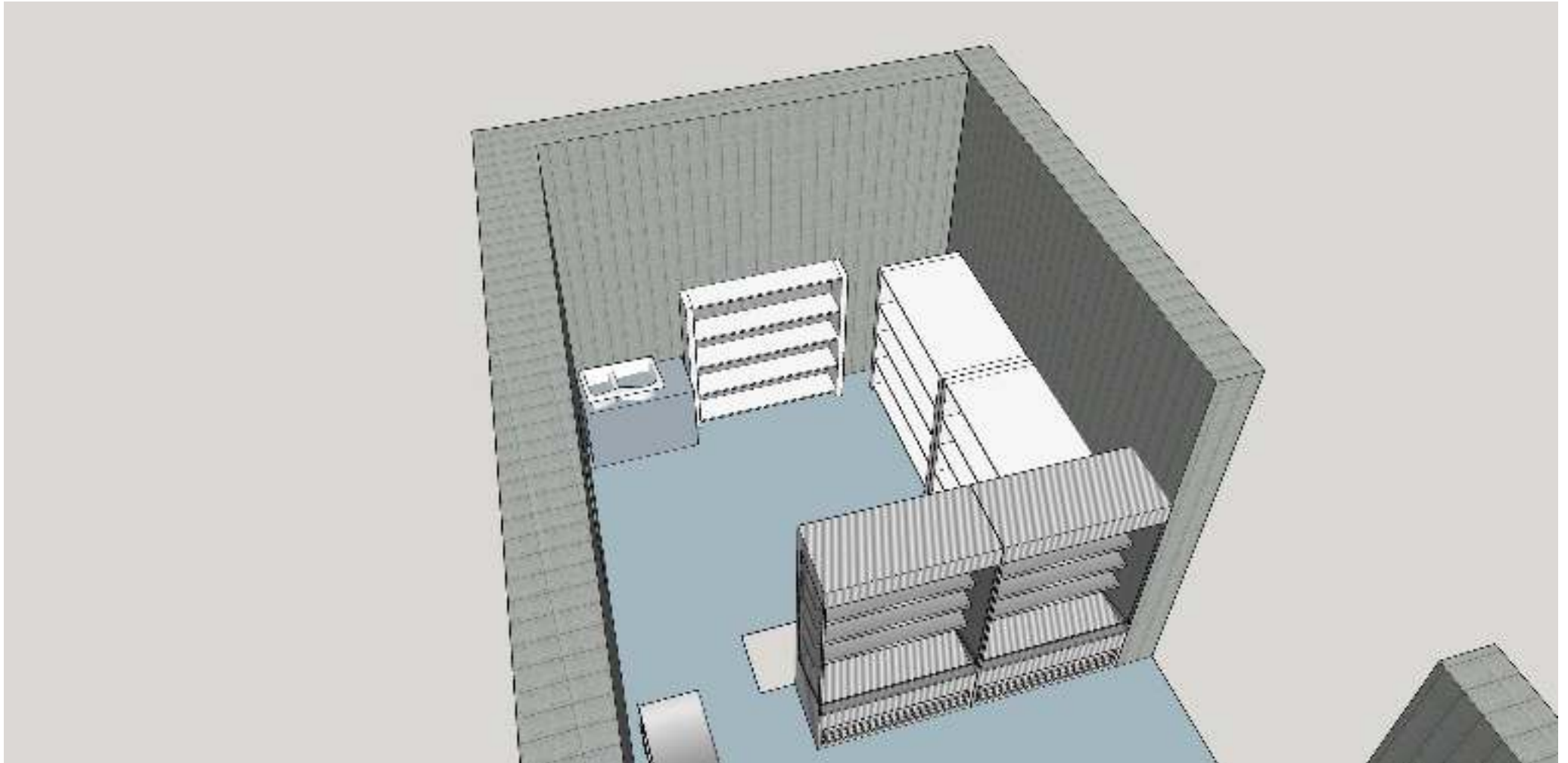


A visual that shows the future activities in the cafe.









Staff storage and mini-kitchen area, which is located at the back of the cafe.



This corner will be dedicated to the students needs: two microwaves to warm food and a storage space.

# Materials

OSB 3 Board (Th)9mm  
(W)1200mm (L)2400mm  
**£14 each X8**



SLÄTTBO, Pendant lamp,  
copper-colour (Ikea)  
**£14 each X10**



High Speed Panini Grill -  
**£4938 (optional)**



Fridge -Gram Upright  
Fridge Single Door 12.3  
cu ft **£785**



Fridge - Arctica Under-  
counter Fridge S/S Finish  
200 L **£329 x 2 each**



Central Epos Management  
Software/ Maintenance/  
License/Installation &  
Training - **£1318**



Toshiba Till / Epos -  
**£1375**

## what can we use?

- Coffee machine
- 2 Toaster (also good for panini but takes longer)
- Hot/Cold display fridges

# **MENU**

## **CALCUTTA HOUSE KITCHEN**



### **MORNING GLORY**

**MUESLI - YOGURT, PORRIDGE OATS, FRESH FRUITS £2.65**

**CROISSANT SELECTION - CHOCOLATE/ALMOND/BUTTER £1.05**

**PASTRY SELECTION - SPINACH/POTATOES/CHEESE £1.05**

### **PANINI £2.95**

**CAPRESE- MOZZARELLA CHEESE, TOMATO, BASIL, BALSAMIC VINEGAR**

**SMOKED SALMON AND CREAM CHEESE**

**CROQUE MADAME - HAM, GOUDA CHEESE, EGG, BECHAMEL SAUCE**

### **SALADS £2.65**

**MEDITERRANEAN SALAD - CUCUMBER, TOMATO, RED ONION, CHOPPED CARROT AND SWEET RED PEPPER, PARSLEY & MINT. WITH A TOPPING OF DICED FETA CHEESE & BLACK OLIVES.**

**PASTA PASTA - FUSILLI, CHERRY TOMATOES, BLACK OLIVES, BABY MOZZARELLA, PESTO**

**CHICKEN BREAST SALAD - GRILLED CHICKEN FILLET STIR-FRIED IN SWEET CHILI, SERVED ON LETTUCE, ARUGULA, CHERRY TOMATOES, CARROT, SPROUTS, CUCUMBER & RADISH SEASONED WITH MINT VINAIGRETTE WITH A TOPPING OF JA'ALA (ROASTED SEEDS)**

### **DRINKS AND EXTRAS**

**COFFEE (ALL KINDS) £1.65**

**TEA £1.20**

**COLD DRINKS £0.95**