

HOME MADE- Second Term



**Briefs 3-10**

A design journey to explore the combination of multi gender and the home.



#### The City

The City of London is based on the original Roman town of Londinium, founded in around AD50. The City's boundaries have remained almost constant since the Middle Ages and it is often called The Square Mile, as it is almost exactly one square mile (2.6 square kilometres) in area.

- 229,000 males / 143,000 females



#### Spitalfields market

As an international city, London is celebrated for its diversity in population. The East End has always been recognised for the wealth of cultures represented. Spitalfields served as a microcosm of this polyglot society, the 'melting pot' fusion of east and west. Historically, it has played host to a transient community – primarily for new immigrants.



#### Brick Lane

Bangladesh is a patriarchal society where men are the primary authority figures and women are subordinate. This has serious implications on women's and men's life prospects.

- there are more than 8 barber shops for men only
- in most restaurant men are the mainly employee



#### Shoreditch

The weird and wonderfully dressed hordes keep coming to the rough triangle made up by Old Street, Great Eastern Street and Shoreditch High Street, packing in toramshackle bars and independent shops. Despite the spread of affluence, much of the area maintains its original gritty, urban edge; many of the walls and shop fronts are plastered with graffiti

- many LGBT bars
- transgender support
- unisex shops

### Brief 3 - Neighbours Site Map

Page number: 23





### Spitafields observation

I set out with my research by walking in Spitafields market area in order to identify and observe gender related places and activities. Within a very short distance that I covered, I was able to detect the obvious gap between different cultures, from old and traditional to new and modern.

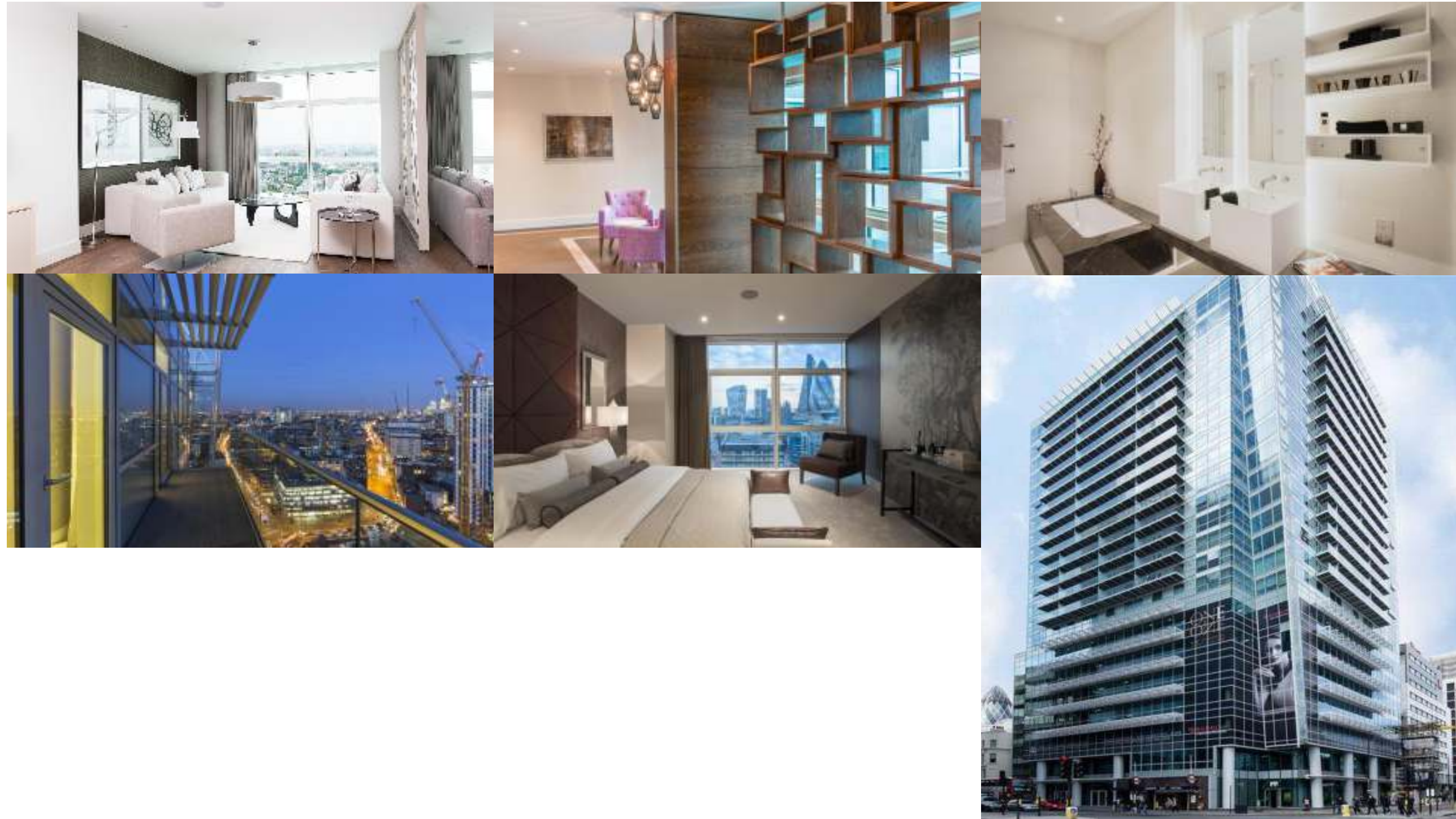
From left to right:

(1-2) Gents only barber shops in Brick Lane. The street itself is part of Banglatown and is noticeably dominated by male gender. As one of the restaurants employee pointed out to me, this was due to the Indian tradition according to which women stay at home as many of them are not allowed to work.

(3-6) unisex shops in Spitafields market, selling clothes targetting both women and men.

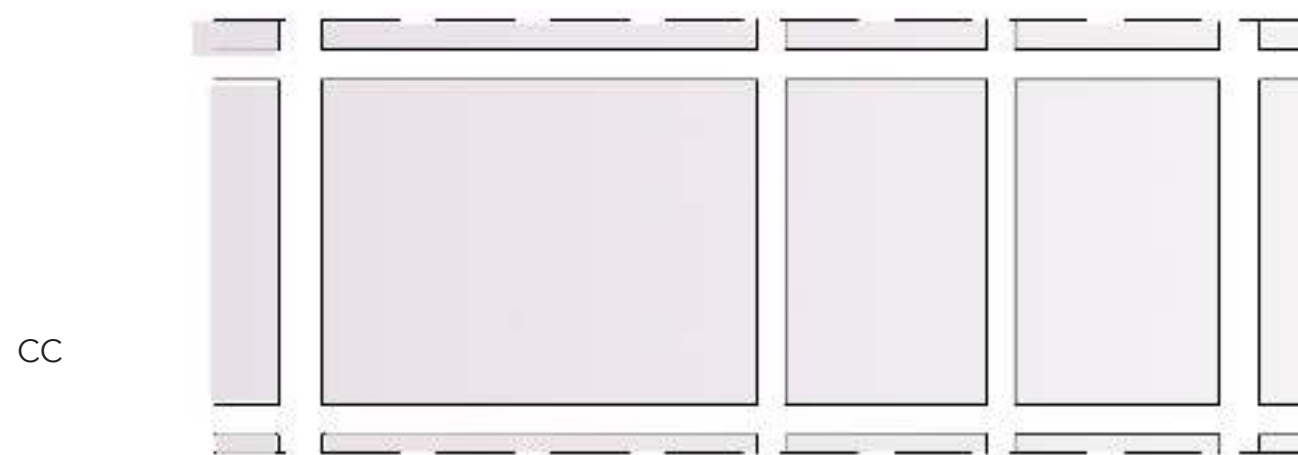
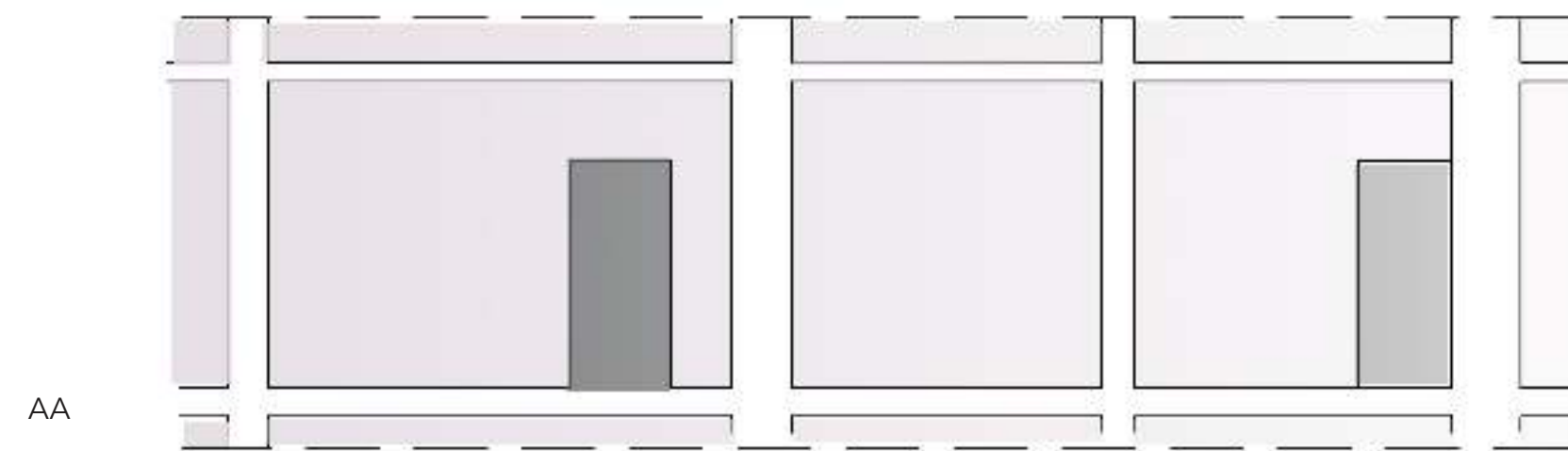
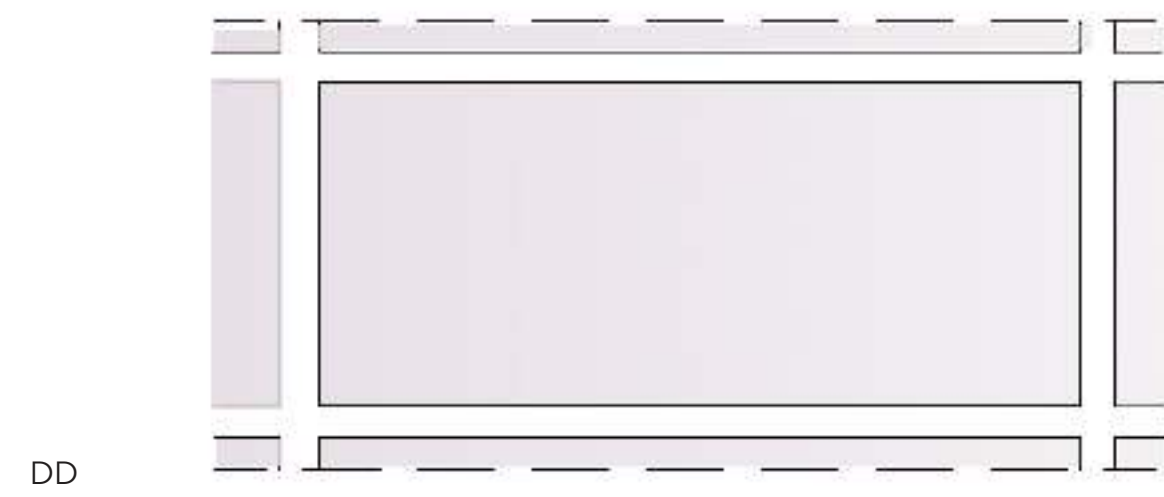
(7) A City Street- London business center. Even though women are increasing assuming leading roles, still there are almost 50% more men than women who work in the City.



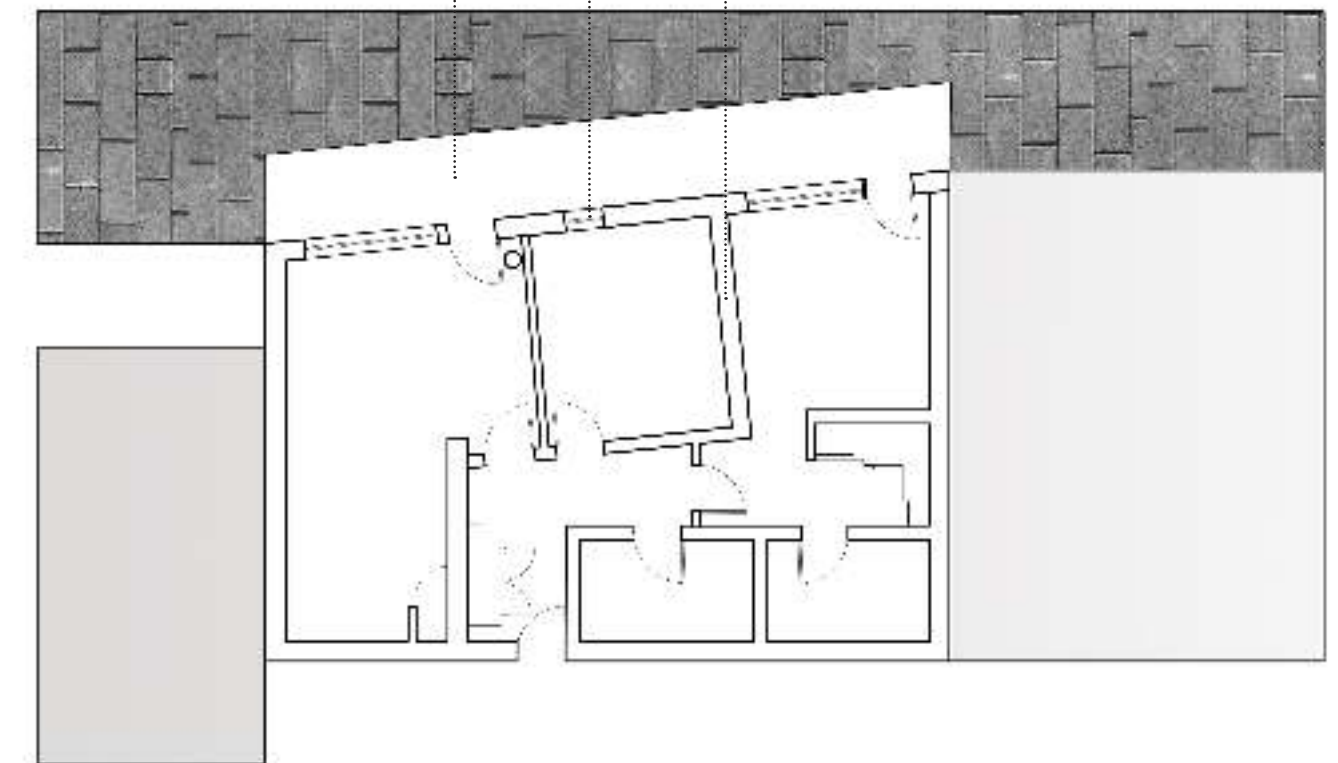


### The Relay Building

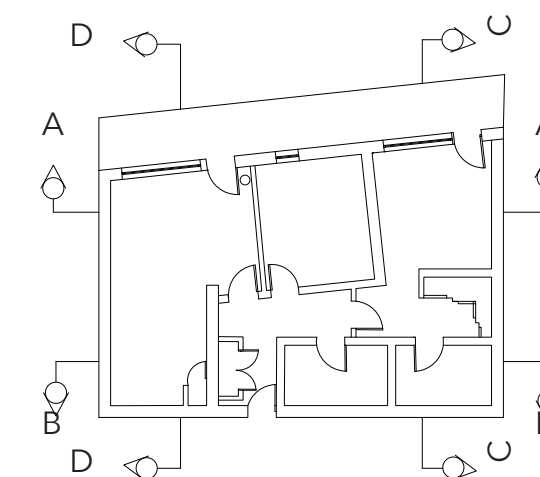
The Relay Building is located on the top of Aldgate East Station, Commercial road. This is a new building, part of many other new builds in the area. Combined old and new, Aldgate, Spitafileds and E1 area are under a renovation program. I chose the Relay Building as it demonstrated what I was looking for: A new, modern building, which accommodates tenants that represent the modern society and the new behavior.



1:50 Existing Sections



1:100 Existing Plan



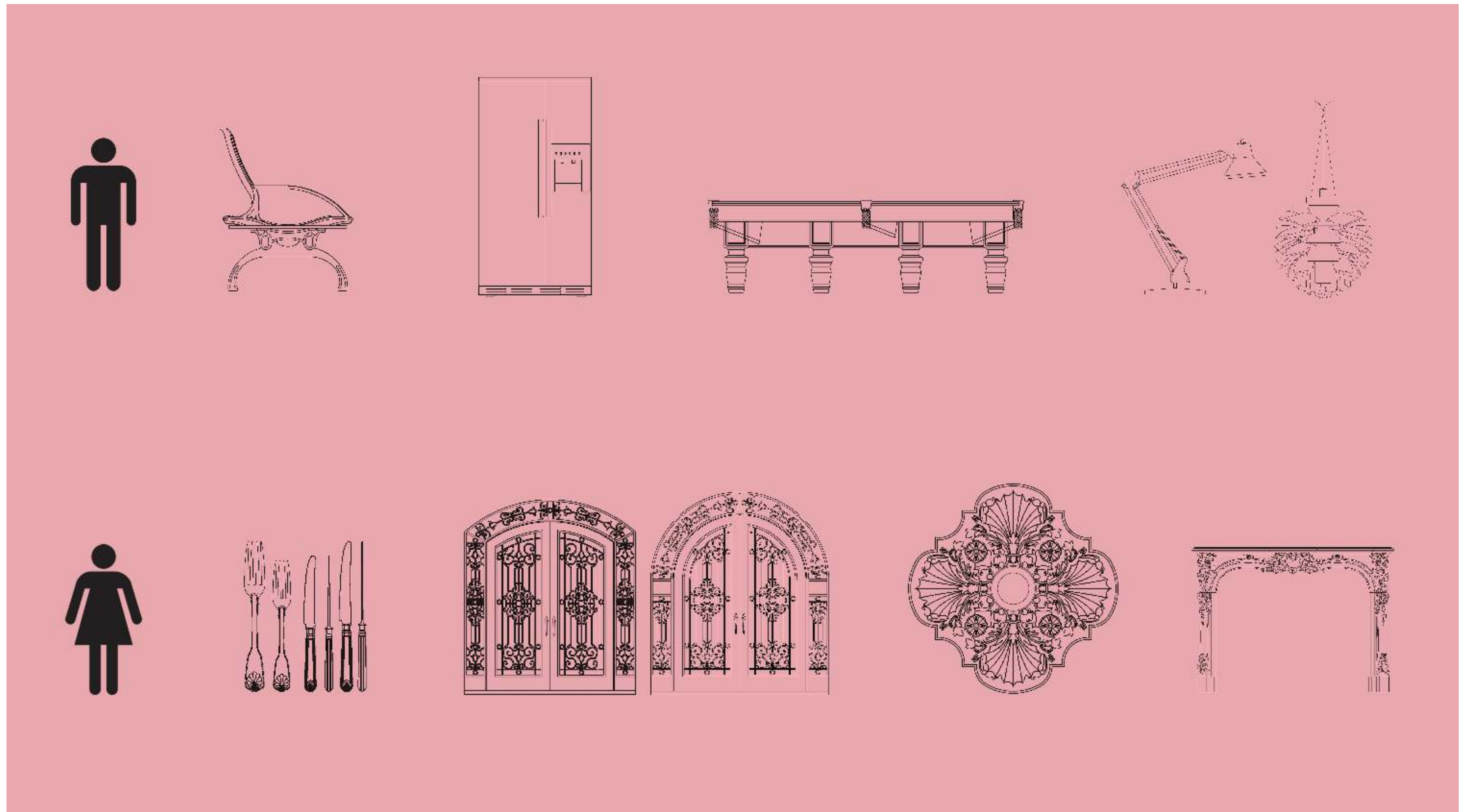








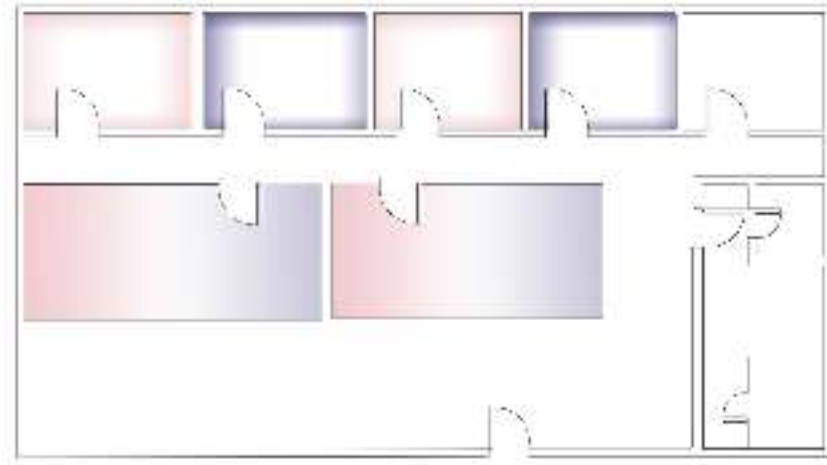




This page shows different design elements that brings up the question of “What is masculine and what is feminine”. In the Male section I am presenting a series of objects with a typical masculine feeling: a modern armchair, a billiard table, a side lamp and chandelier, and combined new technologies such the fridge.

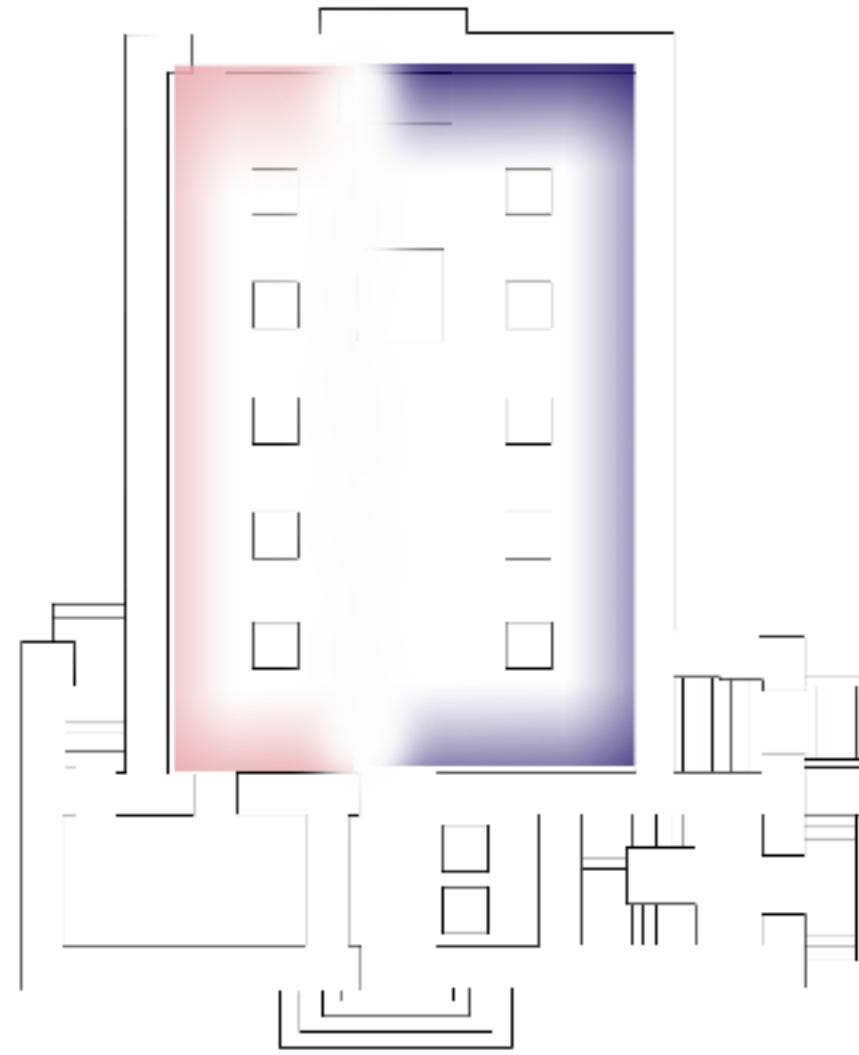
In the Female section I showed a french fireplace, a historical ceiling center taken from the Marie Antoinette Fontainebleau Palace in France, door with flower-detail and a set of vintage cutlery.





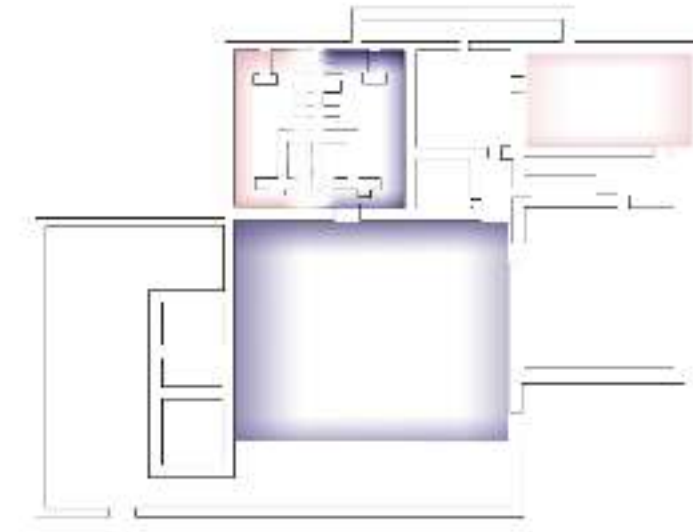
1

1. This is a plan and picture from the Nan Spa in Berlin, Germany. A well known spa offers private rooms for treatments specific for men or women only.



2

2. This is a plan and image from the Nożyk Synagogue in Warsaw, Poland. In the Jewish religion women are seated separately from men, as we can see on the left side.



3

3. This is the Cary Street Gym in Richmond, Virginia, which is known for offering men or women days.

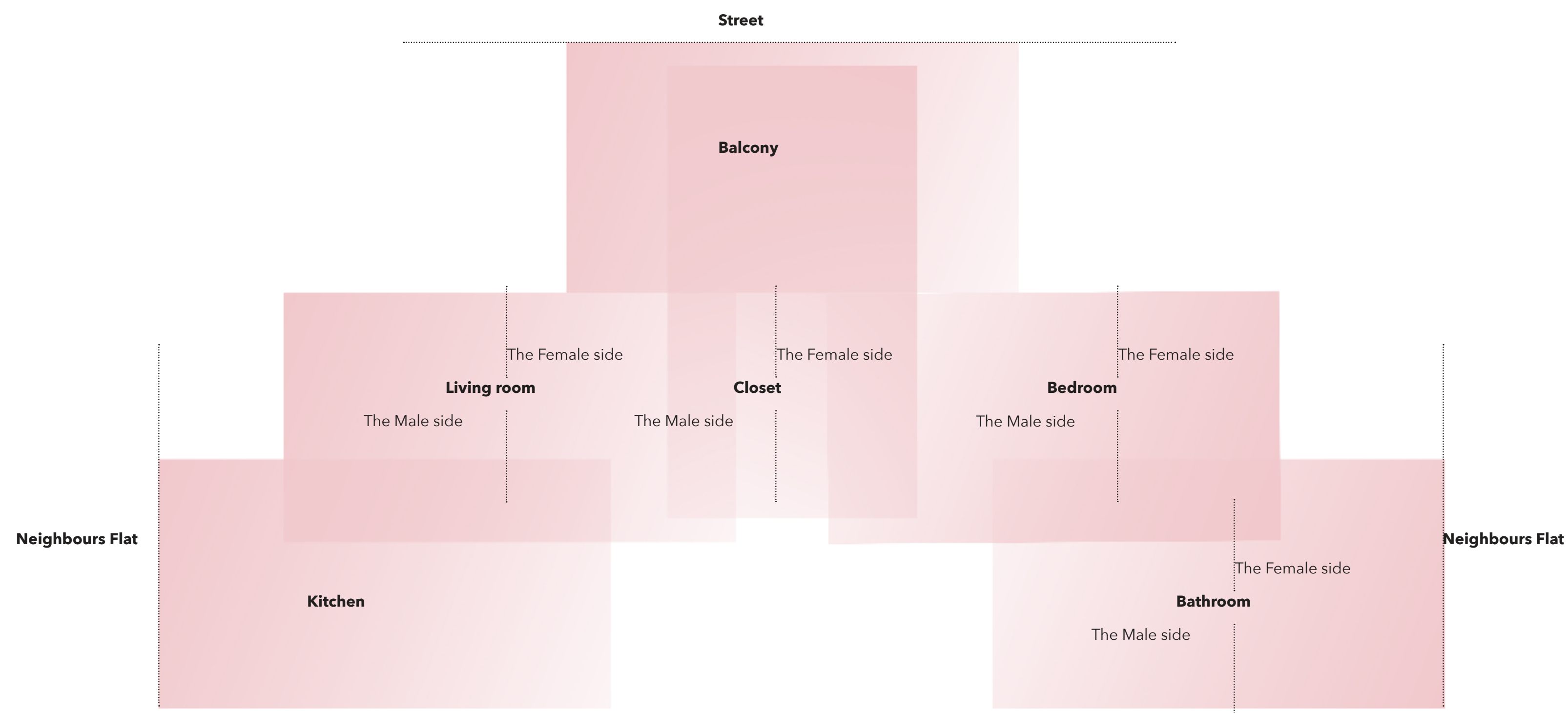




**Design Language: Materials**

Thinking about what masculine materials can be, I was thinking about dark, cold and sleek spaces. I was looking at offices, man caves and masculine apartments, and collected a selection of materials that can be associated with men. Similar with women, I was looking at soft, romantic spaces and materials, also inspired by the fashion fabrics and trends.





This diagram shows how the house can be divided into separate rooms. Each room also divided into half. Each half belongs to a different gender, but both tenants can use it - in regard to their identity.







A **drag queen** is a person, usually male, who dresses in drag and often acts with exaggerated femininity and in feminine gender roles. Often they will exaggerate certain characteristics such as make-up and eyelashes for comic, dramatic or satirical effect. While drag is very much associated with gay men and gay culture, there are drag artists of all sexualities.



**Hijra** is a term used in South Asia and in India in particular - to refer to trans women (male-to-female transsexual or transgender individuals). In Pakistan and Bangladesh, the hijras are officially recognized as third gender by the government, being neither completely male nor female.



**Kabuki** is a classical Japanese dance-drama. Kabuki theatre is known for the stylization of its drama and for the elaborate make-up worn by some of its performers. kabuki can be interpreted as "avant-garde" or "bizarre" theatre. The actors were bizarrely dressed and swaggered on a street.

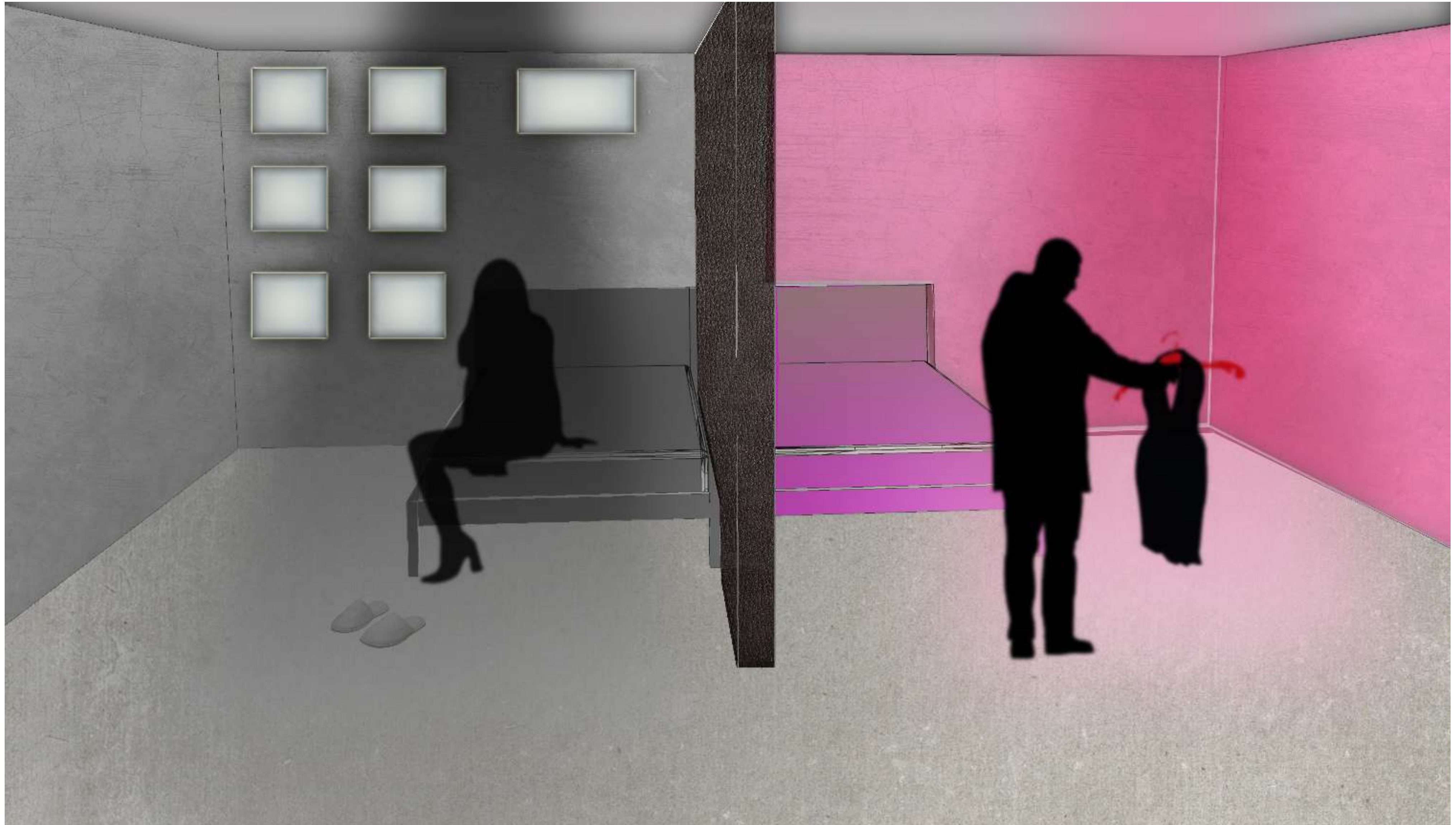


A **kilt** is a knee-length non-bifurcated skirt-type garment with pleats at the rear, originating in the traditional dress of men and boys in the Scottish Highlands of the 16th century.



**Korean shamanism** is the ethnic religion of Korea and the Koreans. In contemporary Korean language, the shaman-priest is known as a Mudang if female or Baksu if male, although other names and locutions are used. Korean mu "shaman" is synonymous with Chinese wu, which defines priests both male and female.



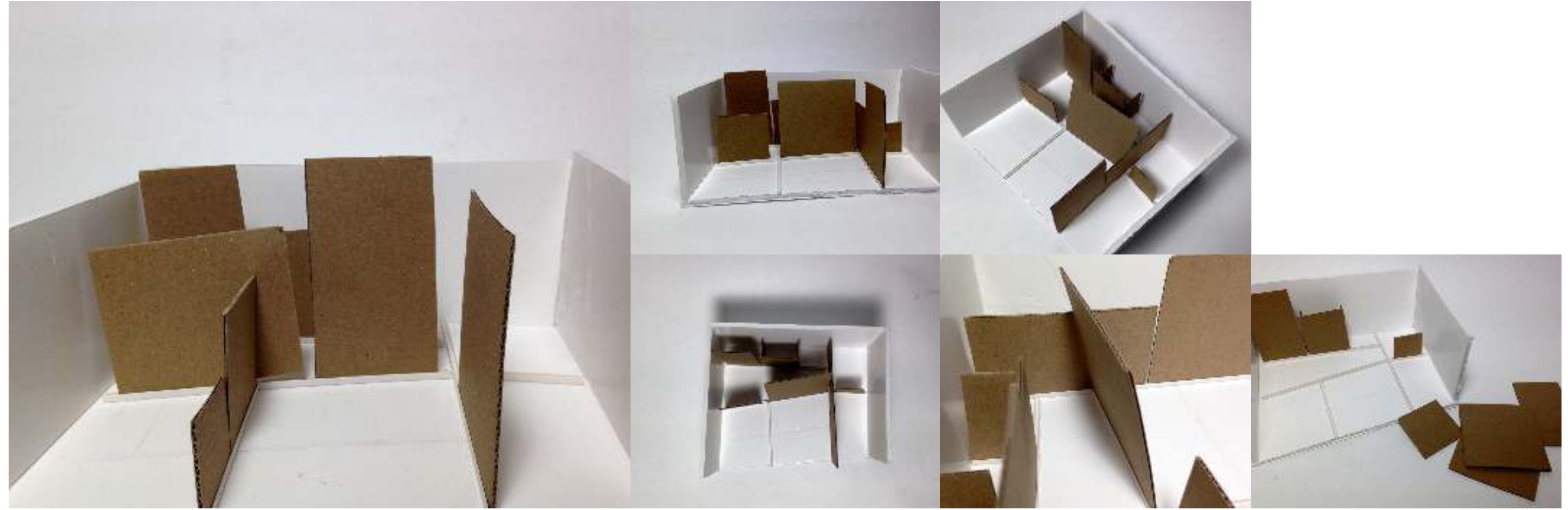


This visual depicts a man picking a dress in the female side of the bedroom, thus capturing a moment before he starts the transition. At the same time, a female is sitting on a bed on the male side of the bedroom, looking at herself in one of the many mirrors in the room. Having many mirrors in order to look at yourself many times can be defined as a feminine behaviour (frequent check of hair, make up, clothes...) but the reason to place it in the male side is to blend the gender activities with the design of the space.









With this model I experimented the different spatial of the space by testing the walls that divided a flat. I created a model of the flat and tested how many rooms I can create if I have a rail with sliding doors. Together, the walls can create different rooms by dividing them as each side of the wall will be covered with different texture. Also, the walls can create an open space flat and can be completely removed, depending on the tenants desire.

Materials used: Foam board and card.

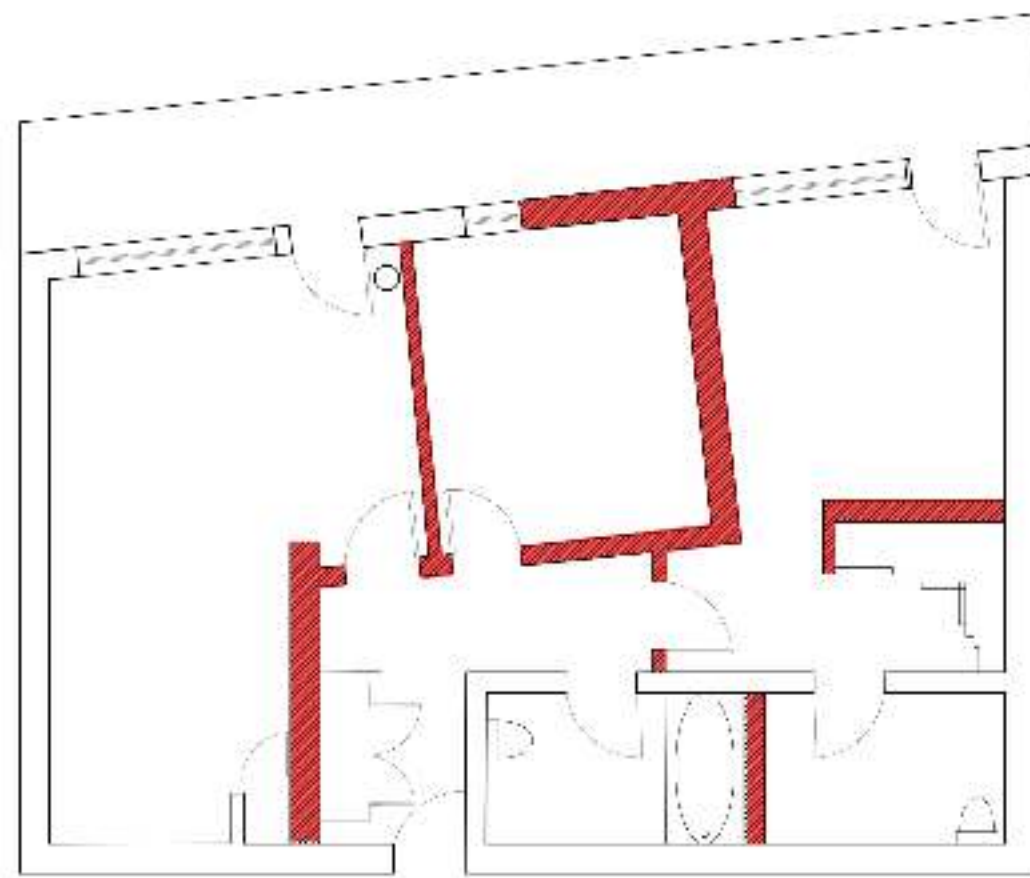




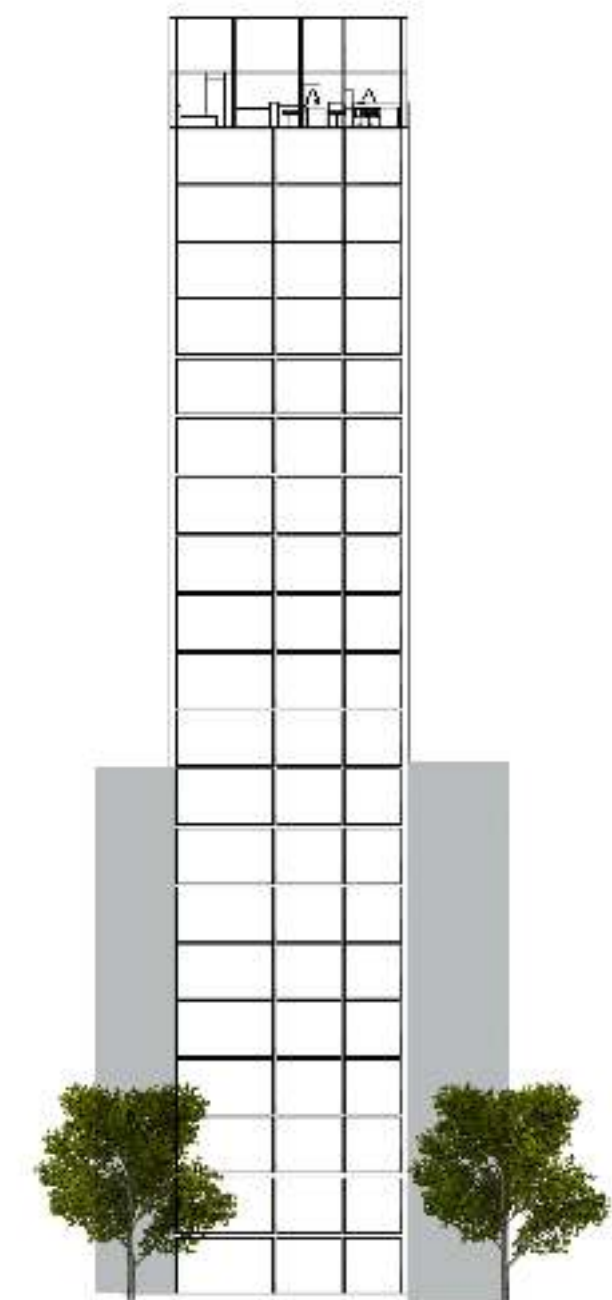
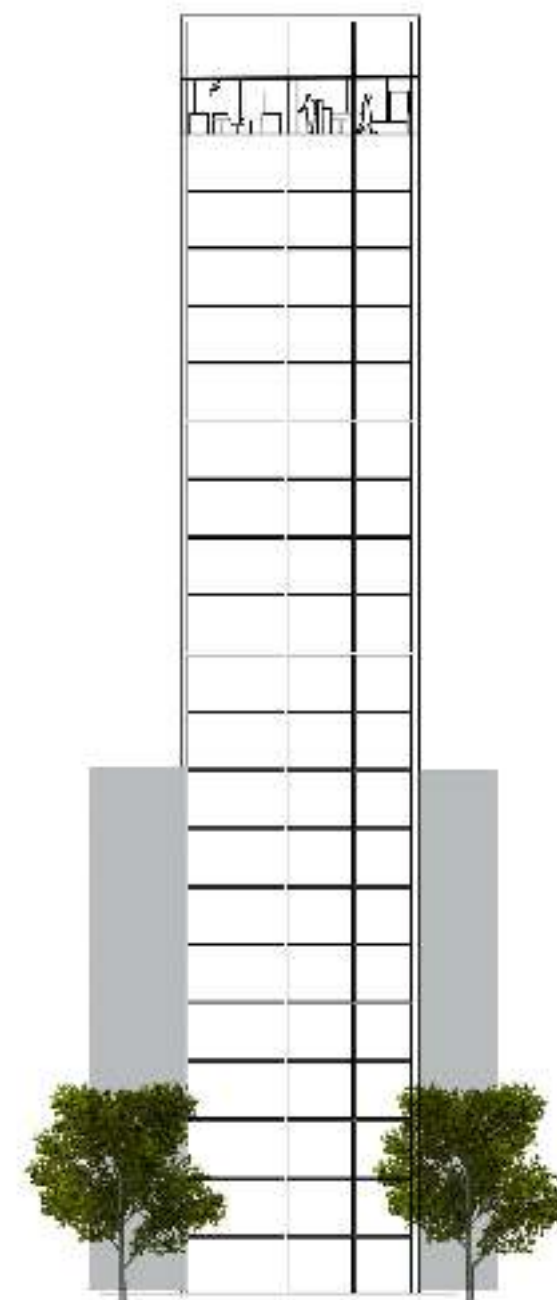
A sliding door is a type of door which opens horizontally by sliding, usually parallel to a wall. Sliding doors can be mounted either on top of a track below or can be suspended from a track above and some types disappear in a wall when they are slid open.

Sliding doors will be a key element in my design proposal, as they allow the creation of dynamic spaces within rooms changing on daily base. Each side of each wall will be covered with different texture, refer to the specific side of the room.

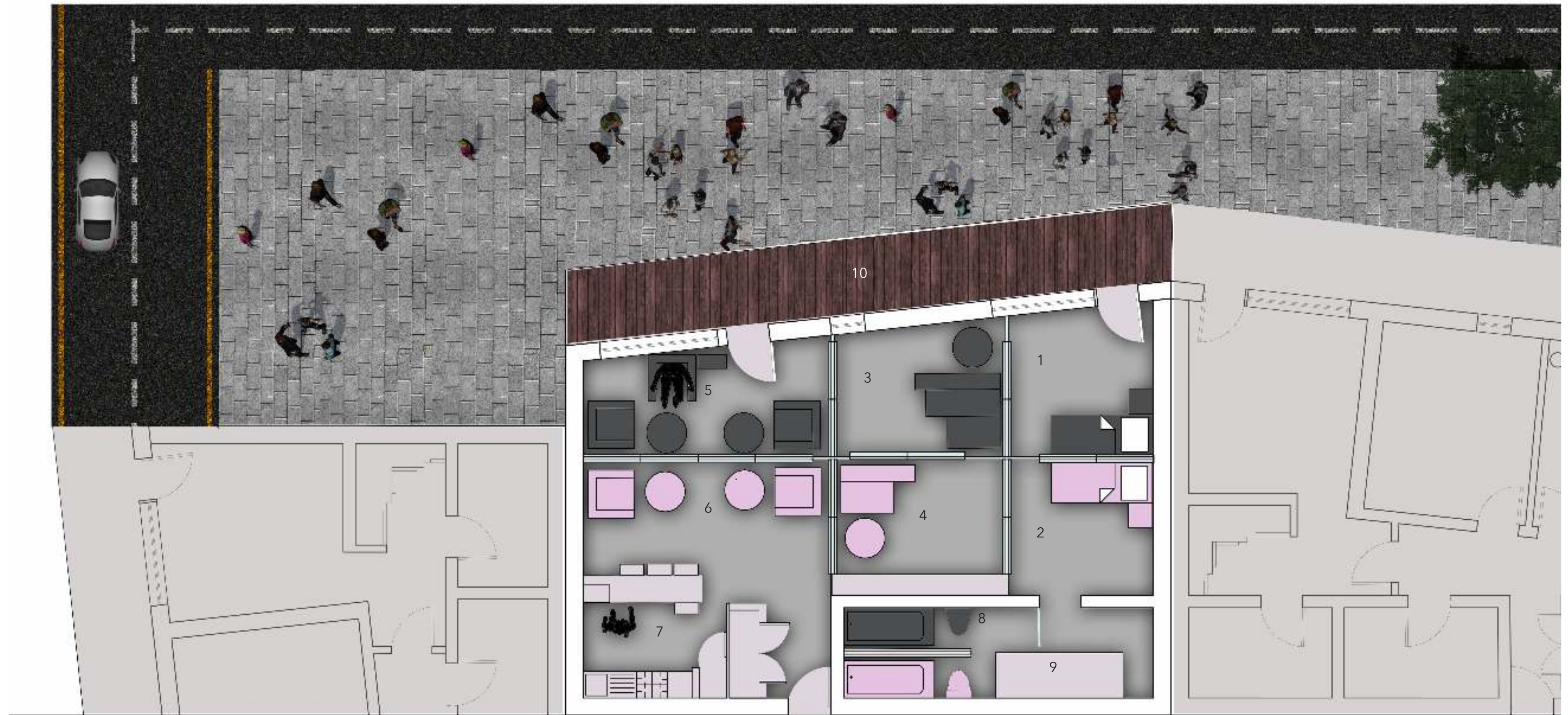




1:50 Demolition plan







#### Proposal Plan:

This flat is what I call a dynamic flat. There are four living options, created by means of moving the walls that allow the existence of different spaces. I used two single pieces of furniture, such as two single beds and two single sofas, but together they create a double piece for the married couple. The sliding walls, that are located between the furnitures, define the space.

The couple are sharing the wardrobe as they interchangeably wear male and female outfits - depending on their identity at a specific time.

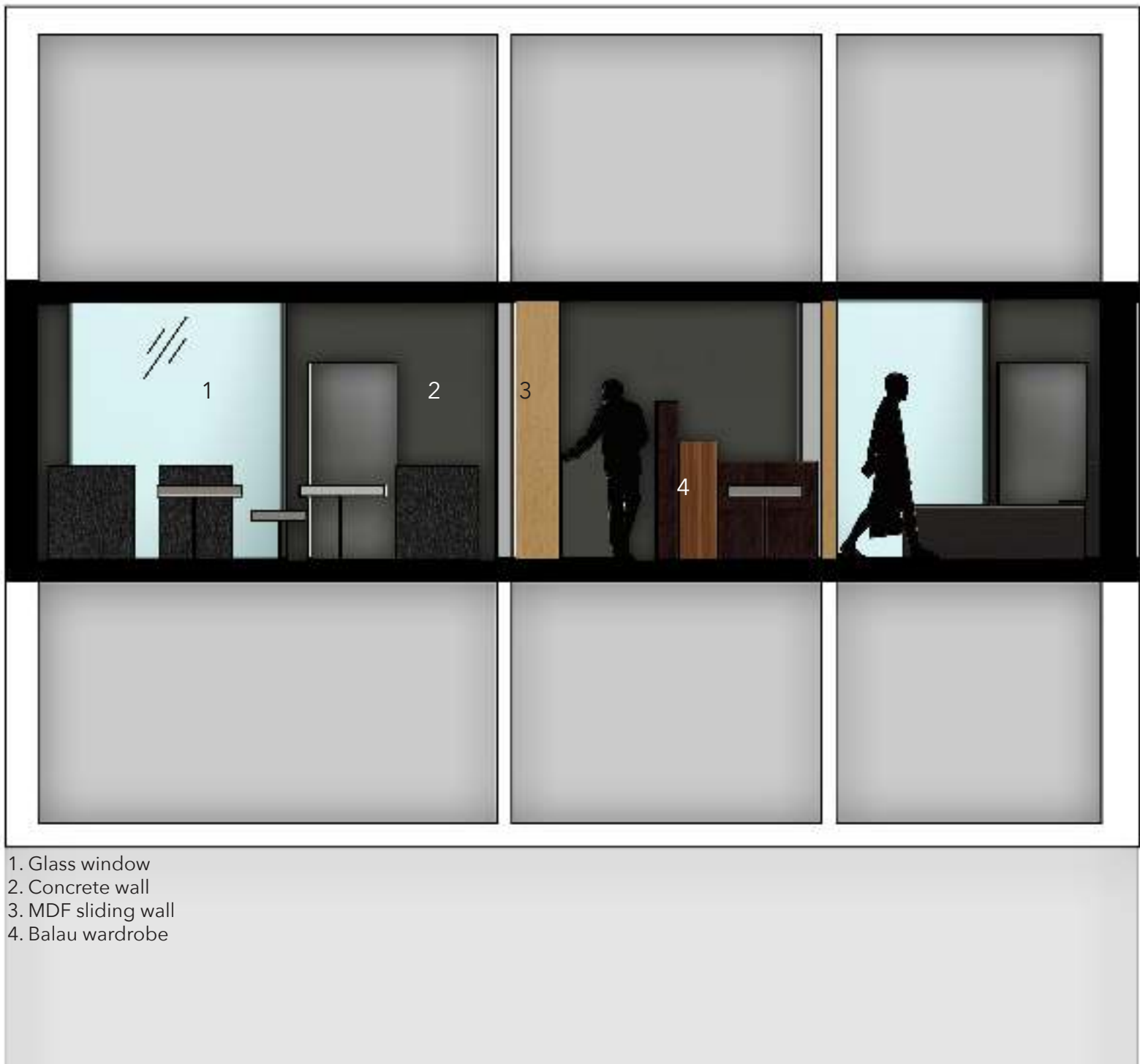
The bathroom is also divided into half. In the center there is the Mirror cube - a mirror display I designed to allow the person who stands inside to see himself/herself from seven different angles.

1. Male side bedroom
2. Female side bedroom
3. Male side closet
4. Female side closet
5. Male side living room
6. Female side living room
7. Kitchen
8. Bathroom
9. The Mirror Cube
10. Balcony



The Male side

This section shows an optional half of the flat for the male tenant. Starting from the living room on the left side, design with materials that can be associated with masculinity: concrete walls, leather chairs, glass coffee table. Moving to the wardrobe - which is made of dark Balau - a popular timber of South Asia. The Hijra culture in South Asia inspired me to use this material. The last room is the bedroom.



The Female side

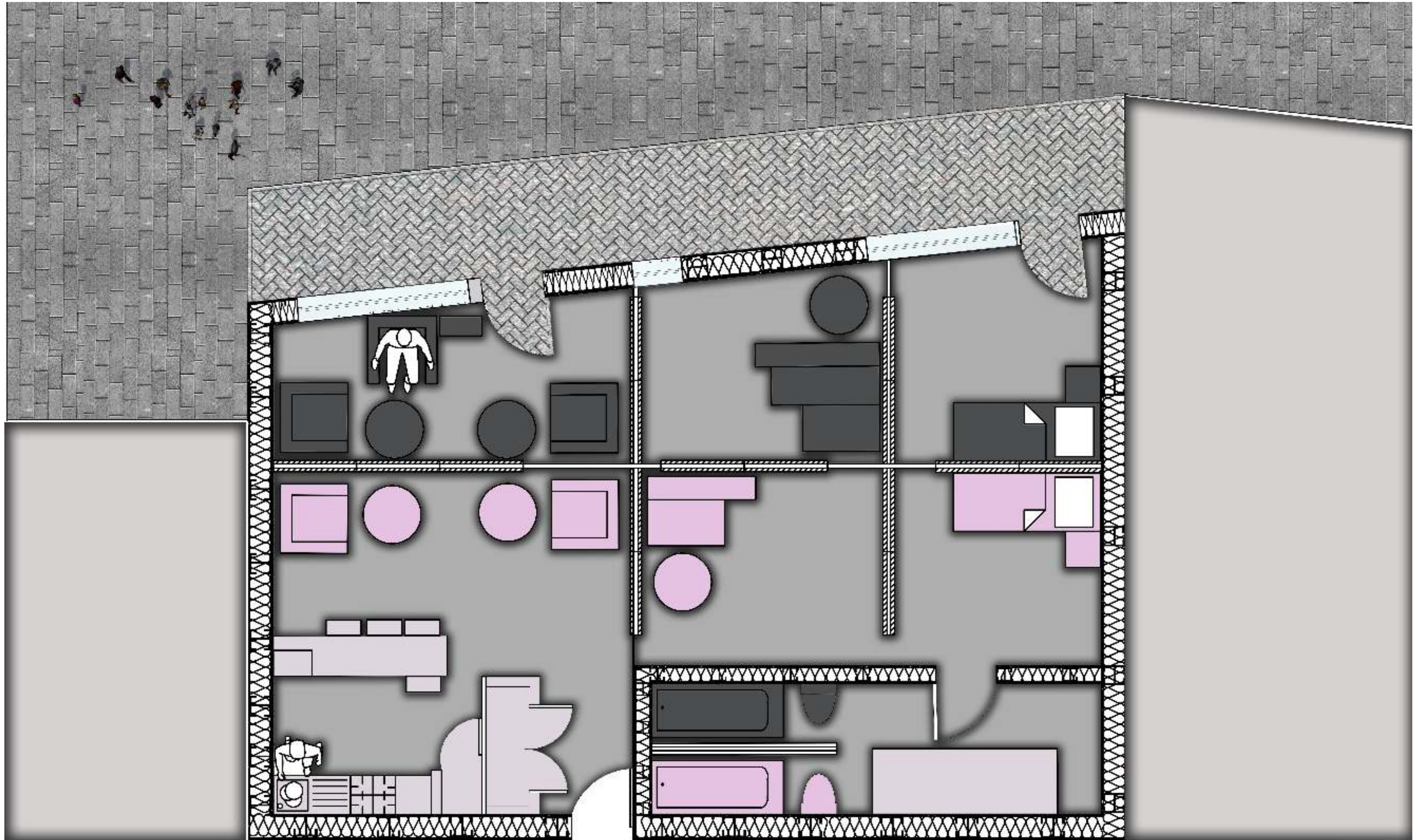
This section shows an optional half of the flat for the female tenant. Start from the living room in the right side, where the sofas are covered with Sakura Cherry Blossom print, inspired from the Kabuki culture. This feminine and romantic print help to create the mood for the space. The colour theme is very soft, with shade of cream. The kitchen is located next to the living room, and it is the only room in the house which is not divided into half.

The flat's main entrance is next to the kitchen, and it merges with the wardrobe - this time her side.

From the wardrobe to the left you can find the bedroom, which is also connected to the bathroom.

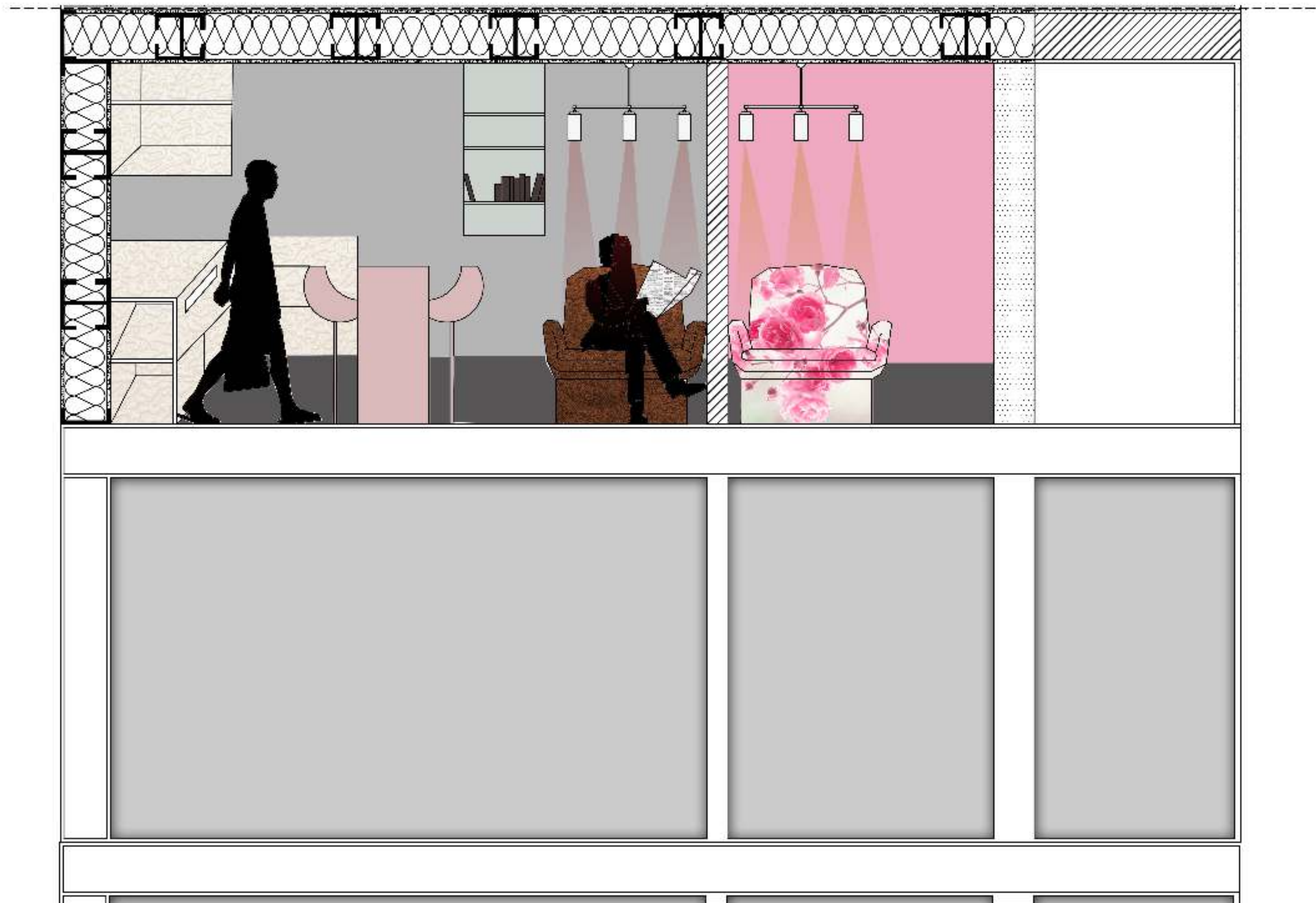




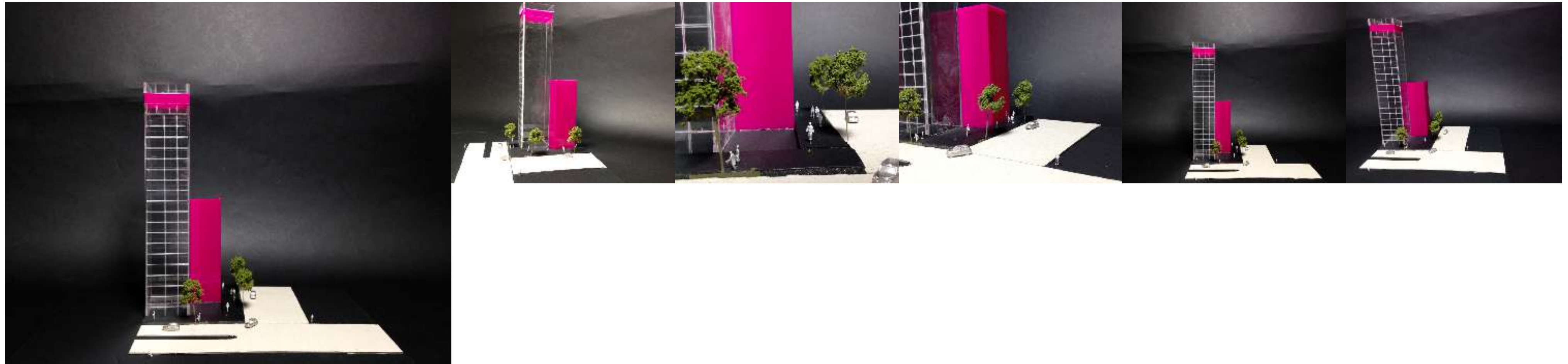


1:20 Plan showing the structure - a concrete wall, Plaster wall and isolation,









1:200 context model

In this model I showed the location of the flat in the building (in the 22nd floor) and its position from the street.



Final model, scale 1:50

I created a model that shows the key element in the house: The sliding walls and the single furniture pieces. I used Acrylic for the material and laser cut for the making. I chose the pink colour as an homage for the LGBT and queer community, as it one of their trade colours.